
David Smooke


TRANSGENIC FIELDS, DUSK

FOR PIANO

Performance Notes


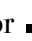
- All repeat indications (2x, 3x, etc.) show the total number of times the figure should be heard. When a figure repeats until a cue, it should end at the cue point without regard to where, within the figure, the player happens to be at the time.

- The rhythm throughout should be phrased with a great deal of *rubato* and should be synchronized only where indicated by dashed barlines or vertical arrows. The note shapes indicate relative duration as follows:


|||| = sustain until indicated

|| = 8" (or as indicated)

 = 4" (or as indicated)

 or  = 2" (or as indicated)

 or  = 1"

 or  = 1/2"

 = somewhat fast

 = as fast as possible

SAMPLE EXERCISE
NOT FOR REPRODUCTION
© DAVID SMOOKER
ALL RIGHTS RESERVED.

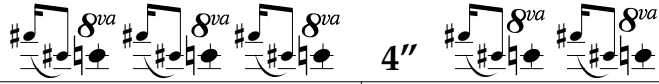
TRANSGENIC FIELDS, DUSK

COMMISSIONED BY GEOFFREY BURLISON
IN LOVING MEMORY OF PETER MARVIT

David Smooke

Sad and expressive

birdlike



ppp

ppppp

pppp

2"

Red. sempre (shimmery wash)

gently pulsing

1

2" *cantabile, like lost birds*

ppp

2

pppp

ppppp

ppp

8^{vb} loco

3"

8^{va}

3"

Copyright © 2012 by David Smooke

(773) 255-1460

dasmooke@gmail.com

All rights reserved.

③

pppp

3"

3"

loco

④ *placid, shimmering*

ppp

3"

simply, wistfully

2"

(echo)

⑤ *cantabile, like lost birds*

8va

8va

gently pulsing

birdlike

ppppp

ppp

3"

6 *placid, shimmering*

pppp
3" *simply, wistfully* 2" *(echo)*

ppp *(echo)*

pp *(echo)*

7 *pppp sub.*

8^{vb} 8^{vb} 8^{vb}